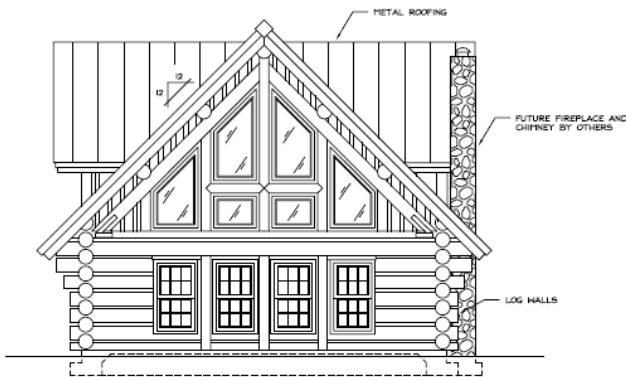
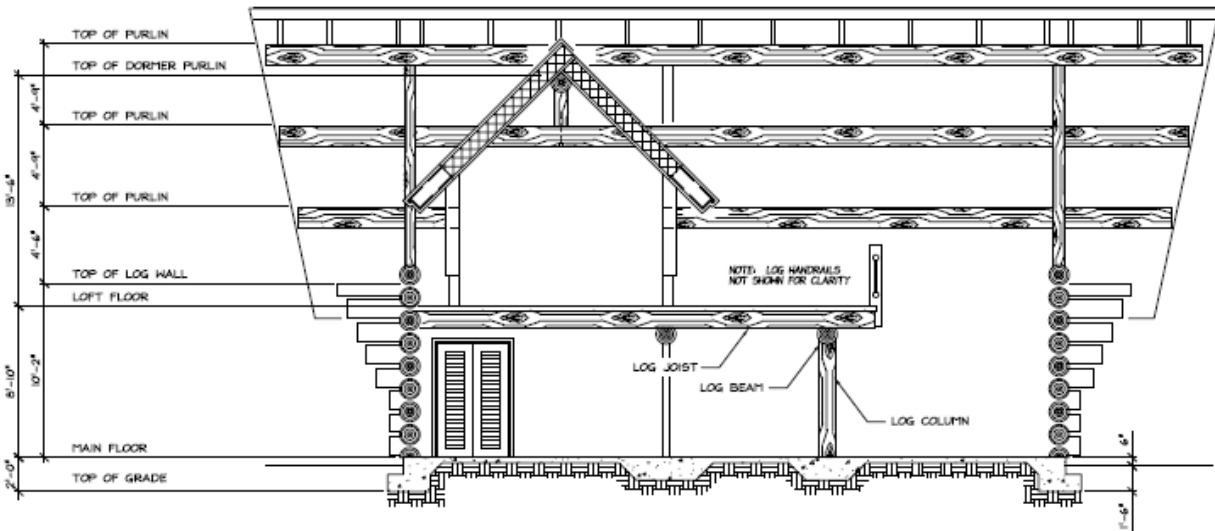


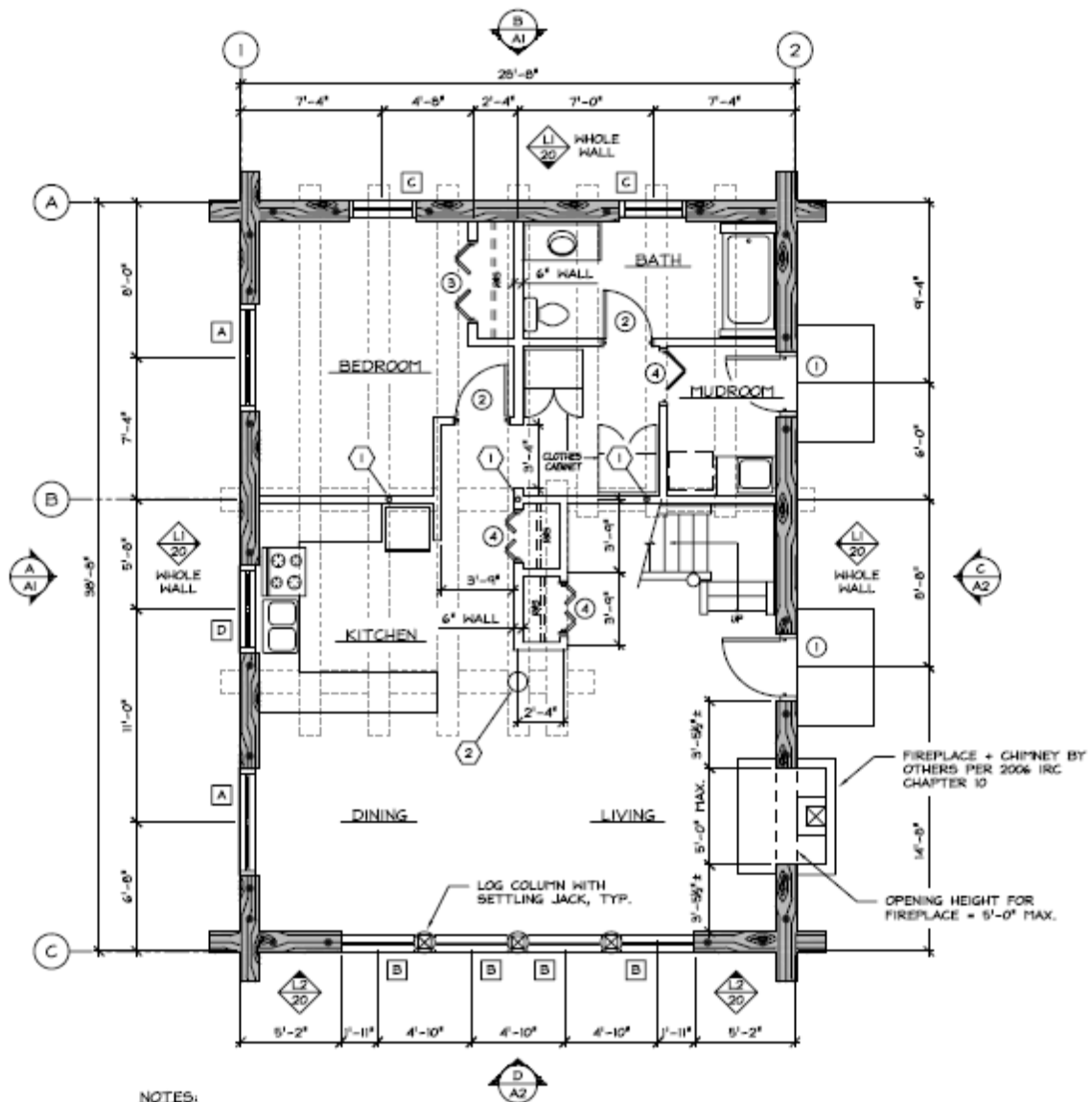
(C) EAST ELEVATION 1/4" = 1'-0"



(D) SOUTH ELEVATION 1/4" = 1'-0"



(E) TYPICAL CROSS SECTION AT HOUSE 1/4" = 1'-0"



NOTES:

- 1 3" STL PIPE COLUMN IN WALL (SUPPORTS GIRDER ABOVE)
- 2 12" LOG COLUMN
- 3 SEE SHEET 56 FOR LOG SHEAR WALL SCHEDULE

1
A4 MAIN FLOOR PLAN

1/4" = 1'-0"



